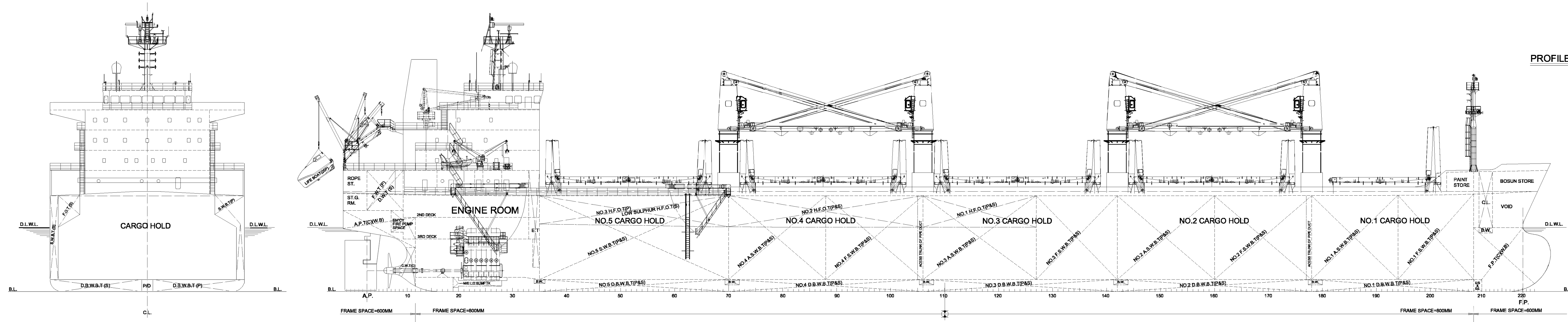


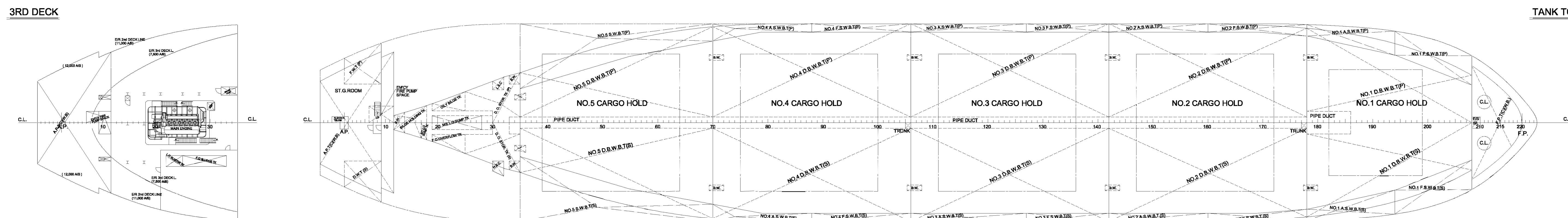
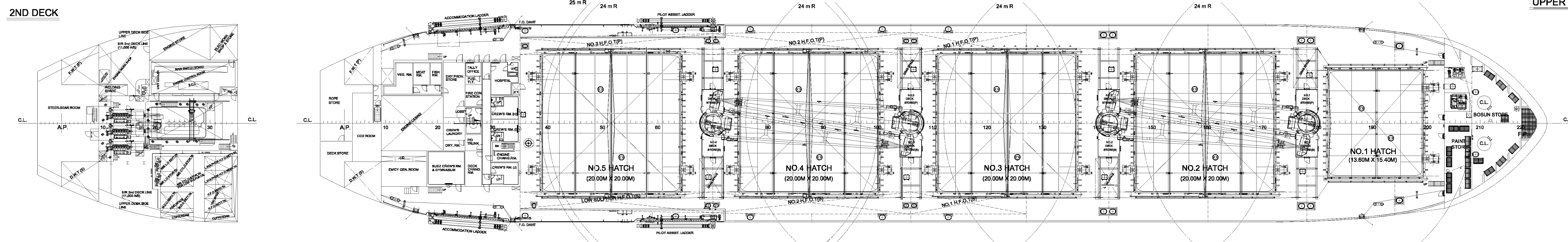
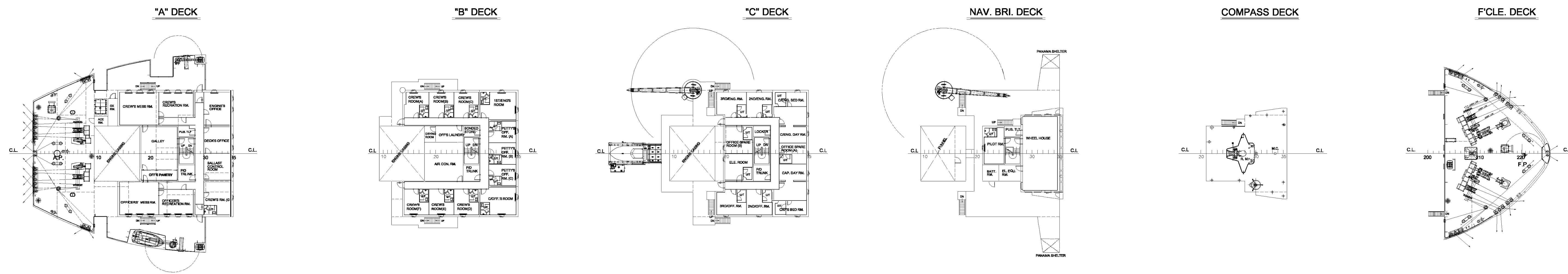
BIBLIOGRAPHY

REV. NO.	DATE	DESCRIPTION	BY	CHK.	APP.	REMARK
1	2010.04.09	FINISHED DWG FOR OSN1002				



TYPICAL SECTION

PROFILE



PRINCIPAL PARTICULARS

LENGTH (O. A)	178.90 M
LENGTH (B. P)	171.30 M
BREADTH (M.L.D.)	28.80 M
DEPTH (M.L.D.) UPPER DECK	9.949 M
DRAFT	34.0 94 MT
DEAD WEIGHT	STX MAN B&W 6S42MC(MK7)
MAIN ENGINE	6,480 kW x 136 RPM
(at MCR)	5,832 kW x 131.3 RPM
SERVICE SPEED (on DESIGN DRAFT)	13.8 KTS
(NCR with 15% S.M.)	25P
COMPLEMENT	25P
CLASSIFICATION	KRS

*KRS1-Bulk Carrier, HCE(Hold Nos.2 & 4 may be empty), SeaTrust(DS1), FH, IWS, ENW(AFS, IOPP, ISPP, IGP, IAPP), GRAB, CHA, LI +KRM1-LMA, STCM

B-1

IMO No. 9469752
"CECILIA"

HULL NO.	PROJECT
OSN1002	34,094 DWT BULK CARRIER
APPROVED	S.C. KWON
CERTIFIED	Y.M. LIM
CHECKED	T.H. JEONG
DRAW	M.S. CHOI

GENERAL ARRANGEMENT

DATE	SCALE	DWG. NO.	DEPT	TEL	REV. NO.	SHEET
2010.04.09	1/300	OSN1002-G-00-20	BASIC	070-8052-5822	1	1/1

